



Enhancing Academic Administration Through Artificial Intelligence

Association for Academic Administrators Conference 2026

Presented by **Linda van Heerden**
Biodiversity and Conservation
Biology Department, UWC



Navigating the Transition: Culture Shock and Adaptation

The Private
Sector Pace

Expectation: Streamlined, high-velocity operational efficiency.

The Academic
Reality

Manual Data
Transcription

Decentralized
Physical Records

Entrenched
Legacy Workflows

The transition revealed a stark contrast between corporate optimization and the manual, deeply nuanced reality of legacy academic administration.

Life Before AI: Data Bound by Physics



The Warehouse Constraint

Information is locked inside corrugated cardboard. Retrieval depends on physical proximity and manual memory.



The Silo Effect

Critical operational data exists in isolated physical silos, incapable of cross-referencing.

In the analog era, information was a physical object you had to carry.

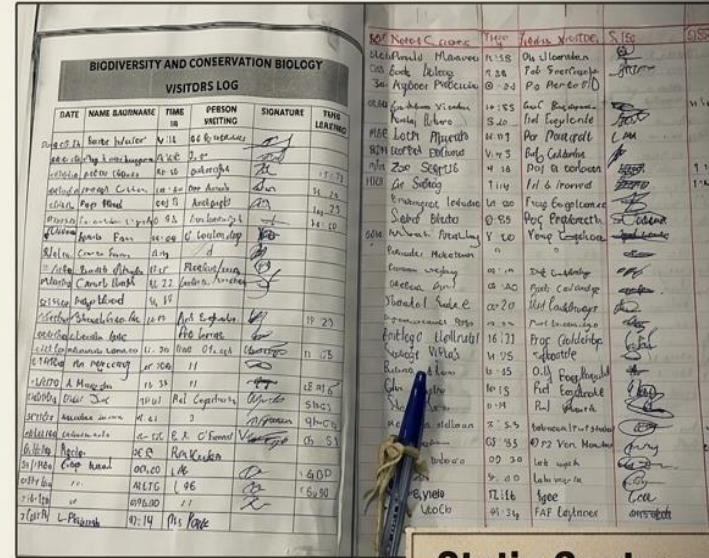


The Anatomy of Administrative Friction



Linear Indexing

Insight: A document exists in only one place at a time. Searching requires traversing a rigid A-Z physical path. Time-to-retrieval is measured in minutes or hours, not milliseconds.



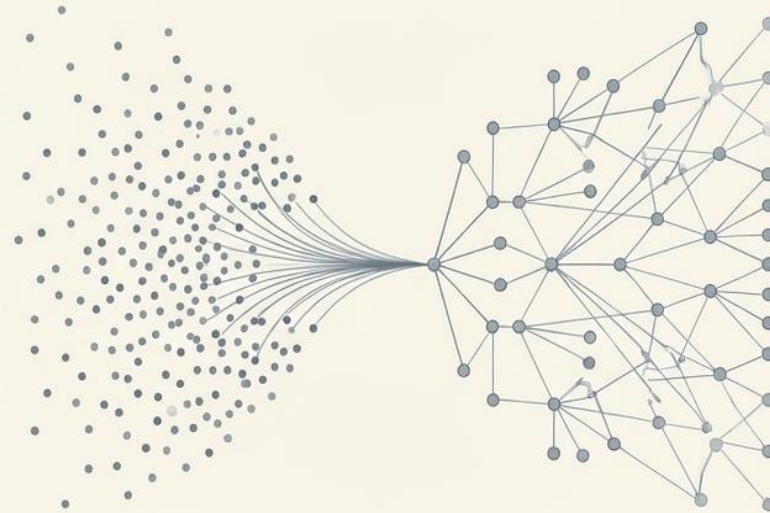
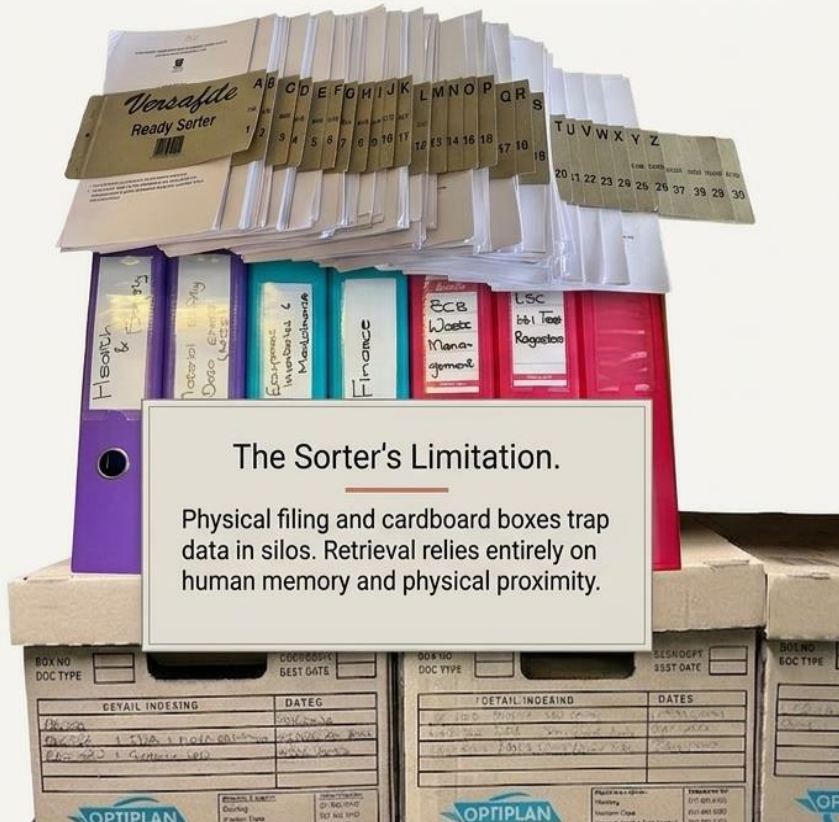
Static Capture

Signatures and timestamps are captured in pen but immediately become "dead" data. No real-time security alerts, no visitor trend analysis, no automated follow-ups.

The fundamental flaw of the filing cabinet: It stores information, but it cannot understand it.



Organization & Retrieval: From Sorters to Semantic Search



The AI Advantage.

AI ingests documents via Optical Character Recognition (OCR) and applies semantic search. It does not just store data; it reads, categorizes, and synthesizes insights across millions of documents instantly, regardless of the original physical format.

An Administrator enhanced by AI



UNIVERSITY of the
WESTERN CAPE

TRADITIONAL ADMINISTRATOR

- Manual Tasks
- Paperwork
- Emails & Follow-ups
- Repetitive Work
- Time Consuming

AI-ENABLED ADMINISTRATOR

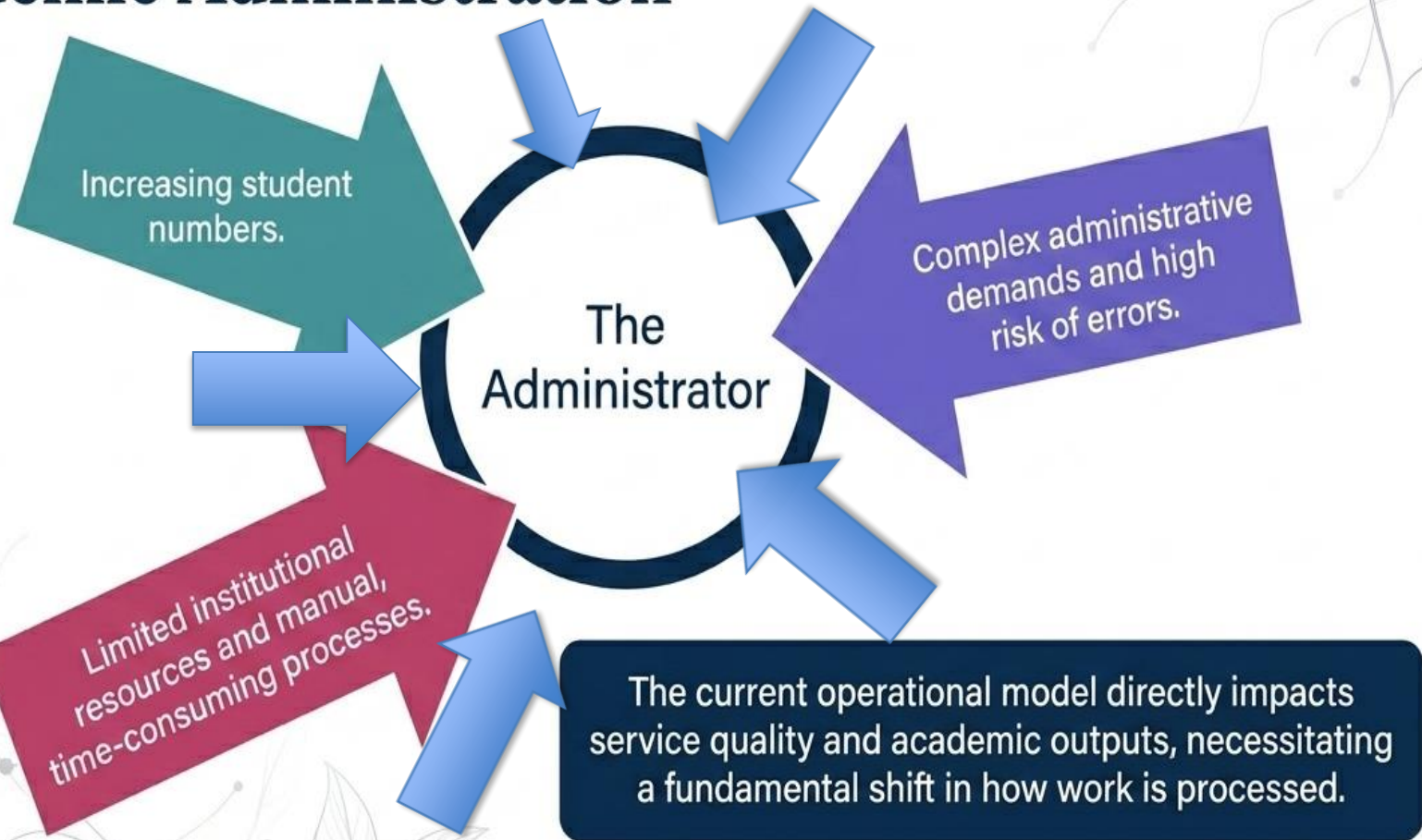
- AI Assistance
- Data Insights
- Smart Automation
- Strategic Work
- More Impact



From Administrative Tasks   To AI-Enabled Impact



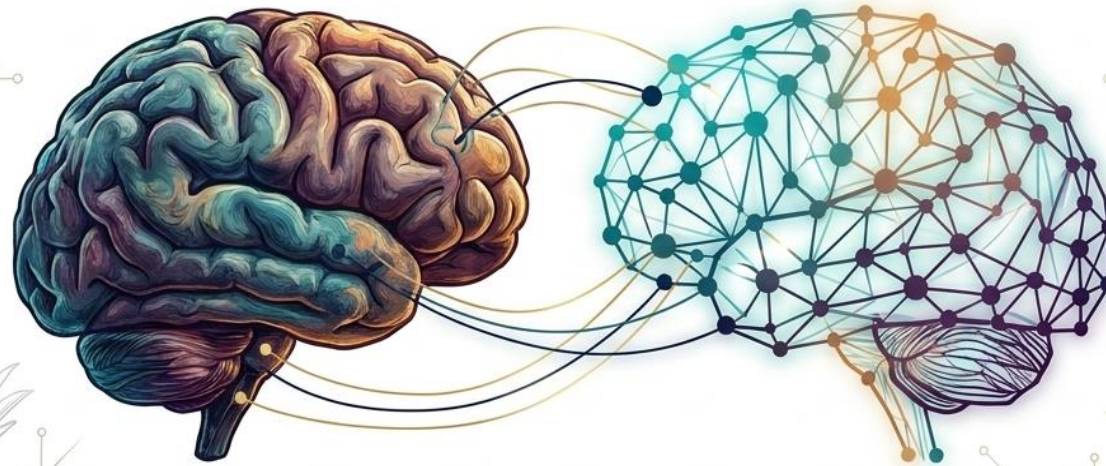
The Expanding Pressures on Academic Administration





UNIVERSITY of the
WESTERN CAPE

Cognitive Complicity: AI as the Administrative Brain Stem



Takeaway: AI is a support tool, not a replacement. It mimics biological efficiency by automating the routine so human expertise can focus on the exceptional.

The Double-Work Paradox

Step 1: Administrator receives outdated, manual process from Academic Staff.

Step 3: Administrator feeds the UWC institutional system.

(The Burden)

Administrator must manually transcribe and translate the old process into the new digital format.

While the overarching institutional process is technically improved by AI, the localized workload on the administrator effectively doubles. They become human APIs translating between the past and the future.

The Hidden Challenge: Caught Between Two Paradigms

Friction Flowchart



Resistant to change, continuing to submit legacy, manual, or unformatted inputs.

Stuck in the middle. Tasked with keeping academic staff happy while simultaneously feeding the new UWC AI systems.

Requires clean, standardized digital data to function.

The Solution: Building a Holistic Alignment Ecosystem



Takeaway: A tool is only as effective as the environment surrounding it.
Cross-departmental education is non-negotiable.

Aligning with Institutional Resilience

Moving away from:

- Workload and resource strain.

Moving toward:

- Smarter ways of working
- Continuous improvement
- Shift to value-added, student-centred service delivery

Implementing a cohesive AI strategy directly answers the conference mandate by driving both immediate administrative relief and long-term institutional competitiveness.



The Hierarchical Ecosystem of Academic Administration

Academic Administration Faculty Managers

Focus: Strategic oversight
and resource allocation

Faculty Officers

Focus: Student guidance
and process management

Examination Administrators

Focus: Compliance and
high-stakes accuracy

Administrative Operational Staff

Focus: Execution and
data input

All integration must
flow seamlessly
across all tiers of
this ecosystem to
be genuinely
effective.



The Intended Efficiency of Algorithmic Support



Reduces duplication of
work and eliminates
redundant data entry.



Optimizes the use of
limited institutional
resources.

Future-Ready
Administration



Improves consistency,
accuracy, and overall
turnaround times.



Strengthens overall
administrative performance and
institutional responsiveness.

From Survival to Strategic Innovation

My transition from the fast-paced private sector to the complex realities of academic administration was a lesson in resilience.

Today, AI offers us the chance to streamline the fast paced private sector and complex realities of academic administration.

- Embrace AI as a biological extension of our capabilities, not a threat.
- Demand holistic training that includes academic staff to eliminate bottlenecks.
- Reclaim our time to focus on what matters most:
human-centric, future-ready administration.



UNIVERSITY of the
WESTERN CAPE

The Invisible Engine

We have moved beyond the limits of paper, boxes and manual transcription.

AI has transformed the back-office from an archive of the past into the predictive engine of the future.

Administration is no longer a physical burden. It is pure velocity.

THANK YOU

Any Questions



UNIVERSITY of the
WESTERN CAPE



Special Thanks to:
Jodene Foster
Khululiwe Ntombela
(UWC PhD; ARC)
Shandre Dreyer- Ackerman
(UWC MSc Candidate)